



# RUFORUM 21<sup>ST</sup> ANNUAL GENERAL MEETING 2025

## CONCEPT NOTE

### Tours and Excursions



## THEME

---

**Positioning Africa's Universities and the Higher Education Sector to effectively impact development processes on the continent**

**Hosts:**

The Government of Botswana and  
RUFORUM member Universities in Botswana led by Botswana University of  
Agriculture and Natural Resources

**Venue:**

Field

**Date:** 29th November, 2025

**Time:** 08:30-17:00

**Contact:** Selma Ndapewa Nghituwamhata (s.nghituwamhata@ruforum.org)

A warm welcome to Botswana – a breathtakingly beautiful country, where rich culture meets wild places. The RUFORUM Annual General Meeting (AGM) is a valuable convening event that provides a platform for RUFORUM member universities, policymakers, and other partners outside the network to come together, share lessons and experiences, and learn from one another to build capacity on the continent. It also provides a platform to experience and appreciate the beautiful cultures and landscapes of the hosting country.

From vibrant cultural villages and local crafts to the awe of the Okavango and other wild landscapes, Botswana invites travelers into unforgettable, close-to-nature adventures. We have lists of nearby attractions, what visitors can do there, when sites are typically open, typical costs, how to contact each site, and how close each is to the Gaborone International Convention Centre (GICC). These options are provided for you to choose options that match your interests, budget, and available time during your stay.

#### Key criteria for selecting sites

- Proximity to GICC: short transfer times to keep outings realistic during a conference.
- Clear activity type: wildlife viewing, cultural heritage, shopping/arts, city viewpoints or walks.
- Cost transparency: low or moderate entry or activity fees.
- Availability: operating hours that suit daytime trips for conference guests.
- Feasibility for small groups: easy to organise with local transport, and limited need for special gear.

#### Recommended sites

Below are seven options to give a snapshot for participants to shortlist or combine into a proposed itinerary.

#### Category A: Wildlife / Nature

**Mokolodi Nature Reserve:** It's a top pick for wildlife, short drives, and relatively easy logistics around Gaborone. Approximately 10 km from the Grand Palm/GICC Resort Area



**Game drives**



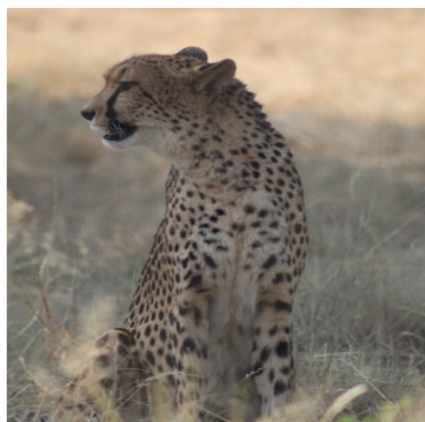
**Rhino tracking**



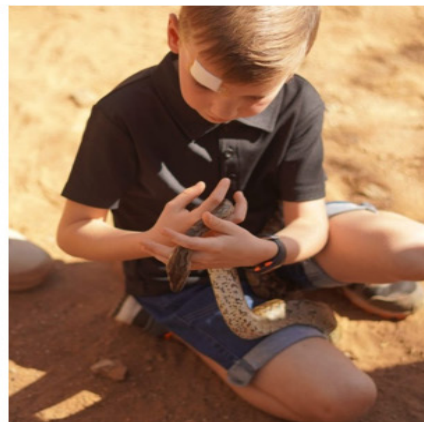
**Giraffe tracking**



**Cycling & Hiking**



**Cheetah Visit**



**Reptile Park Visit**

## Cost / Prices and Operating Hours



Tel Nr 267-71321021 3161955/6  
 Email: [bookings@mokolodi.co.bw](mailto:bookings@mokolodi.co.bw)  
[functions@mokolodi.co.bw](mailto:functions@mokolodi.co.bw)  
[events@mokolodi.co.bw](mailto:events@mokolodi.co.bw)

### Pricelist November 2024 to December 2025

Activities				
	Duration	Adults	Children /12	Children /4
Game Drives (min 4 people)	2 hours	P275	P140	Free
Times: 7:30, 10:30, 14:00, 16:00 daily				
Game drive with Cheetah and Wilddog visit	special request	P350	P200	
Game Viewing Truck (sole use) 25 seater	P4 125	up to 15 guests, thereafter P 275 pp applies		
Luxury Game Viewer (sole use)	P3 150	Up to 7 guests		
Luxury Game Viewer (min 4- sharing)	P 450pp	Up to 7 guests		
Luxury Game Viewer (min 2 pax)	P 500pp			
Reptile Park Visit	30-45min	P50	P25	Free
Times: 9:30, 13:00 and 15:00 daily. Closed on Mondays and Tuesdays				
Rhino Tracking (min 2, max 7pax)	3 to 5 hours	P1 100		
Rhino Tracking in luxury 7 seater game viewer. Times: 7:30 and only on reservation. Includes Packed Brunch				
Giraffe and rhino tracking (min 4, max 10 pax)	3 to 5 hours	P850	P850	
Times: 7:30 and only on reservation. Includes a packed brunch - in 25 seater game viewer				
SANCTUARY WALK (NEW ACTIVITY)		P275	P140	
Fully guided walk to reptile park, sanctuary, cheetah and wilddogs - minimum 4 adults				
Cheetah and Wilddog Visit		P175	P95	
Bush walk (Unguided)- entry fee for non members		P 150pp	Friends of Mokolodi - free	
Guided Bushwalk (members and non members)	min 2 pax	P 275pp	2 to 3 hours	
Bushbraai: Lunch 11:00 (min 15 pax)	5 hours max	P395	P295	Free
Bushbraai Dinner 17:00 (min 15pax)	5 hours max	P395	P295	Free
Bushbraais include transfer to site and 1 hour game drive upon arrival				
Bushbraai without game drive	5 hours max	P350	P250	Free
<b>Cycling :</b>				
Day entry fee for non members P 150				

## Contact details

Phone: +267 316 1955  
 Email: [bookings@mokolodi.com](mailto:bookings@mokolodi.com)  
 Mobile / WhatsApp: +267 713 21021

## Gaborone Game Reserve

The Gaborone Game Reserve is more of an educational nature reserve. It was initially set up to enhance conservation awareness in Gaborone and the surrounding areas. It is an urban wildlife option that is extremely close to the city centre and inexpensive. A travel overview describes it as a small protected area within the city with animals non predatory wildlife including warthogs, impala, kudu, steenbok, zebra, vervet monkeys, and a variety of birdlife.



## Operating Hours and Entry Fees

1. The opening times are from 6:30 in the morning till 18:30 everyday of the week. There is no need to make a booking in advance.
2. Park fees are very affordable. Adults pay P10 and children the age of 17 and below pay P5. If you are using your own vehicle there is an extra vehicle fee of P10.

## Category B: Cultural heritage & City landmarks

### Three Dikgosi Monument

An iconic cultural and historical landmark in the city centre, located in the central business district of Gaborone, a short ride from GICC.



#### Activities

- Viewing and learning about Botswana's path to nationhood through a significant national monument. Good for cultural heritage, photography, and short informative walks.
- The monument commemorates three historic chiefs pivotal to Botswana's political history. A travel overview describes its meaning and historical context, appropriate for visitors interested in heritage.
- Operating hours & Entry Fees
- Open daily from 08:00 to 17:00; admission reported as free.
- Free admission (zero entry fee)

### Botswana National Museum

Deeper cultural visit; educational and history focus located in the central city a short drive from GICC



#### Activities

- Museum exhibitions on Botswana's history, culture, arts, and possibly rotating displays; suitable for visitors wanting a structured cultural learning experience.
- A heritage focused organisation listing confirms it as an established institution, with a long history, highlighting the museum's role in art, history, and culture preservation. (MoMAA)

## Operating hours & public information

- Weekday opening hours for the Department of National Museum and Monuments as 07:30–12:45 and 12:45–16:30, Monday–Friday, except public holidays.
- Free Entry

## Contact details

- Phone +267 361 0400; useful starting point for direct confirmation. (MoMAA)

## Bonnington Farm Monument

A historical and leisure site linked to local heritage and city development located outside the main entrance to GICC.



## Activities

- Viewing a national monument tied to the early history of the area around Gaborone, offering a city-scale heritage perspective.

## Cost/prices

Free Entry

## Category C: Shopping/crafts



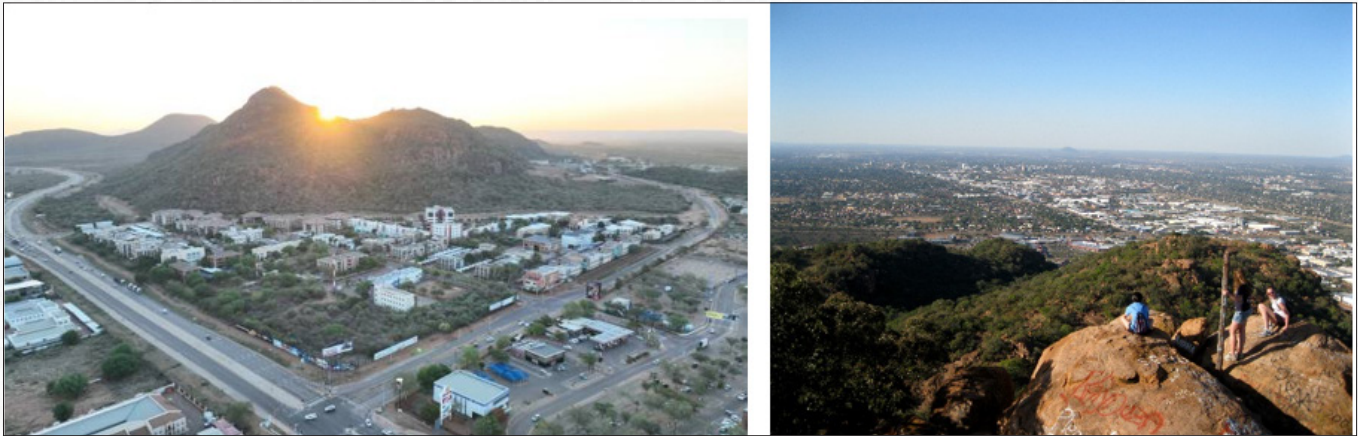
## Botswana Craft shop & market

Strong, reliable place for authentic crafts, shopping, and light dining located within the Gaborone city area for hopping/crafts, relaxed sightseeing, or light walking indoors; budgets ranging from very low to moderate depending on purchases (Botswana Craft Marketing).

## Category D: Active tours, short walks, city viewpoints

### Kgale Hill

Short climbs, city views, and light outdoor activities are located near the city



### Activities

- Hiking/climbing on well-defined routes up the hill that take less than an hour to reach viewpoints offering city panoramas with easy to moderate physical activities.
- Pleasant climbs, breath taking views of the dam and city. Wildlife sightings such as baboon troops and eagles are also possible.
- Cost/prices
- Kgale Hill is an open city hill.

**Logistical Note:** *Participants are expected to make their own transport arrangements to these sites. Local shuttle services can be obtained through Yango or In-Drive Apps that you can download on your phone. It is recommended that you move in a group of at least two people.*